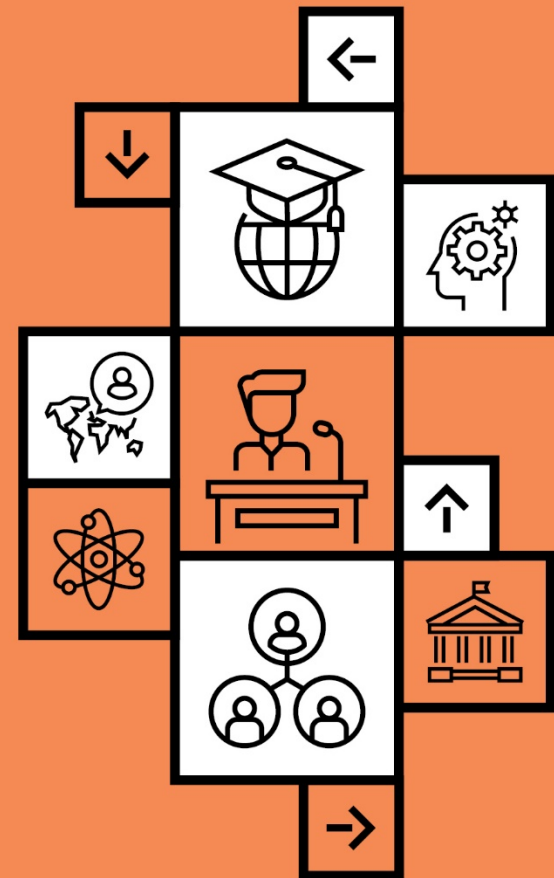


# Sharing Insights of the MICHE Process

November 7, 2019

***Daniel Casten***

***Christopher Medalis, PhD***



**CZEDU** →  
**CON** FÓRUM MEZINÁRODNÍHO  
VYSOKOŠKOLSKÉHO  
VZDĚLÁVÁNÍ

# Outline

- Rationale and Background
- Progress to Date
- General Findings
- Reports & Action Plans
- Future Direction



# What is MICHE?

MICHE = Monitoring of Internationalization of Czech Higher Education

- Initiative of the Ministry of Education, Youth, and Sport (MEYS/MŠMT)
- Organized and Run by Center for International Cooperation in Education (DZS)
- Carried out through a group of international advisors
- Began in Autumn 2018



# 9 Institutions Evaluated to date

- University of Pardubice
  - University of Chemistry and Technology, Prague
  - Palacký University Olomouc
  - University of Hradec Králové
  - University of South Bohemia (České Budějovice)
  - Mendel University in Brno
  - Brno University of Technology
  - University of Ostrava
  - Tomáš Baťa University Zlín
- 



# MICHE Process

- Selection of participating institutions by Ministry, DZS, and agreement of institution
- Self-evaluation report
  - Detailed quantitative and qualitative info
- Advisory panel monitoring visit
  - 2 days
  - Meetings with university leadership (central and faculty level), international office, academic staff, students
- Advisory panel report
- Action Plan



# General Findings

- Awareness of internationalization exists at Czech universities in general
- Institutional accreditation brings major advantages
- Interest in expanding English-taught programs
- International students learn about Czech universities mainly through word of mouth
- Stronger support services exist at research centers



# General Findings

- Mobility is still the main focus
  - Uneven admissions standards
  - Lack of strategic partners
  - Mixed desire and understanding of internationalization among academics
  - Only basic level of adopting internationalization at home, internationalization of the curriculum
  - More support services needed for incoming visiting professors, teachers, and students
  - Need to look beyond the usual sources of funding
- 



# General Findings

- Significant need for more goal setting and methodology to achieve those goals among university and faculty management
- Lack of coordination between central university and faculty levels
- Very low level of individual and organizational accountability for results in internationalization



# General Findings

- DZS:
  - significant improvement of promotion of CZ as a study destination
  - support at fairs abroad
  - staff trainings addressing hot topic issues and best practices in internationalization



# General Findings

- Numerous system-wide, national challenges
- Nostrification
- Visa system discourages the best students
  - inhibits job creation and wage growth
  - not serving the national interest



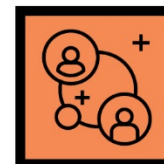
# Reports and Action Plans

- Self-evaluation provides a platform for intra-university discussion and connection
- Strong internal communication is necessary
- Final report is a collaborative process between university and advisory panel
- Action Plans help make next steps clear and concrete and encourage their realization



# Next Steps

- MICHE evaluations likely to continue in 2020; depending on Ministry decision and support
- We commit to reviewing Action Plans and advising universities
- Our tips: use the opportunity to bring all stakeholders together: communicate, share information, and commit to an internationalization vision and concrete goals paired with methodology



**Daniel Casten**  
International Education Consultant  
[dcasten@gmail.com](mailto:dcasten@gmail.com)

**Christopher Medalis, PhD**  
International Education Consultant  
[christopher.medalis@gmail.com](mailto:christopher.medalis@gmail.com)  
[www.linkedin.com/in/christophermedalis](http://www.linkedin.com/in/christophermedalis)

